

Carmen

poltrona/armchair
design: Alberto Turolo

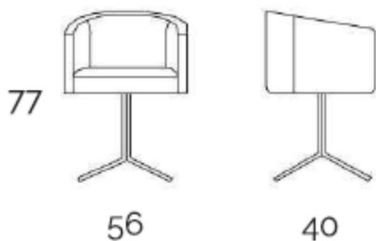


Carmen

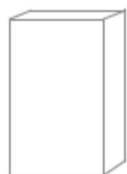
poltrona / armchair
design: Alberto Turolo



itf Design
www.itfdesign.com



Imballo / Packaging



1 X 1 BOX
Kg. 14.50

Cbm 0.14

La bellezza e la semplicità di un'accogliente seduta a pozzetto caratterizzano Carmen, la poltroncina imbottita e rivestita. Progettata per il settore contract, è l'ideale per personalizzare prestigiose sale d'attesa, ristoranti ed hall, ma è perfetta anche per ambienti residential arredati con spirito contemporaneo. La base è girevole e disponibile con gambe in tondino curvato verniciato acciaio satinato.

Beauty and simplicity are the features of Carmen, the comfortable tub armchair that comes in an endless combination of coverings. Conceived for the contract sector, it is the ideal solution to personalize prestigious lounges, restaurants and halls, but it perfectly fits in with residential spaces, furnished according to the contemporary mood. The swivel base comes in curved tube satin steel finish.

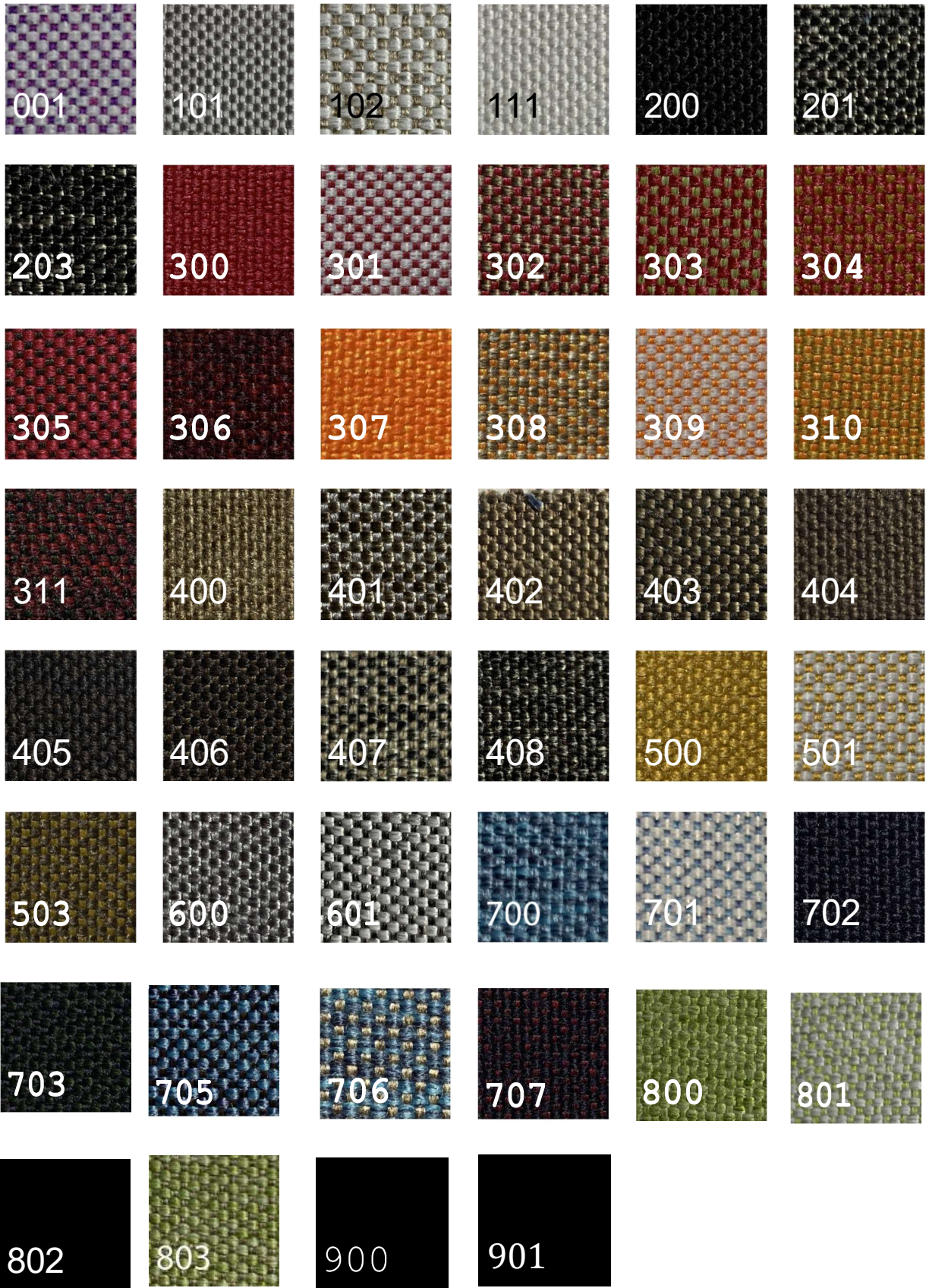
Ecopelle / Ecoleather



Ecopelle / Ecoleather



Tessuto Angel/Angel Fabric



Tessuto Caliente / Caliente Fabric



Tessuto / Fabric IRIS

Tessuto per interni
Indoor fabric



IRIS
Crema



IRIS
Biscotto



IRIS
Nociola



IRIS
Tabacco



IRIS
Castoro



IRIS
Fango



IRIS
Limone



IRIS
Salvia



IRIS
Verde bosco



IRIS



IRIS



IRIS



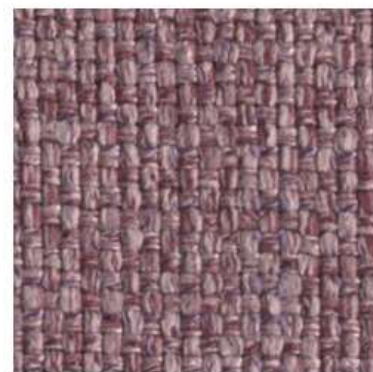
IRIS
Acciaio



IRIS
Navy



IRIS
Glicine



IRIS
Malva



IRIS
Cipria



IRIS
Grigio chiaro



IRIS
Grigio



IRIS
Elefante

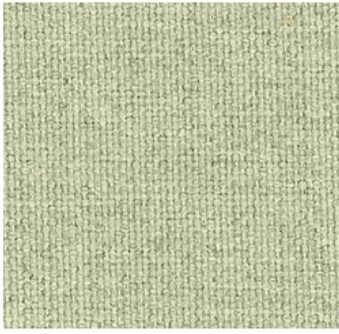


IRIS
Antracite



IRIS
Grafite

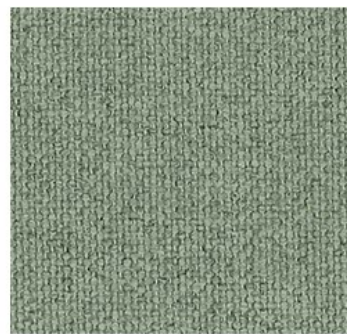
Tessuto Shore/Shore Fabric



LIMA



TOFFEE



GREEN



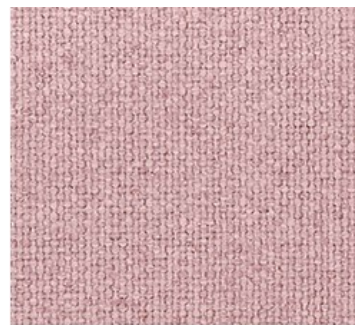
TRUFA



CREAM



SALMON



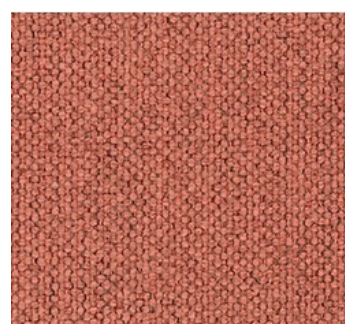
PINK



CAMEL



YELLOW



TEIA



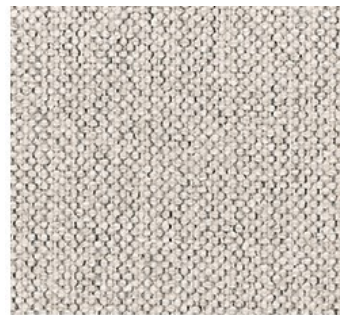
MOKA



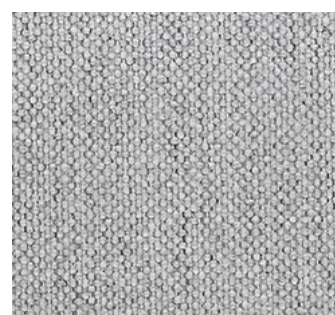
CHOCOLATE



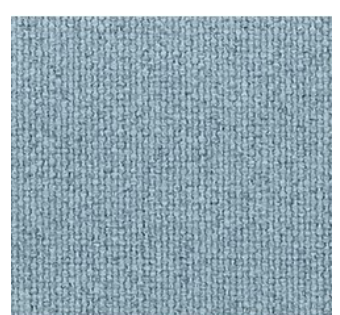
RED



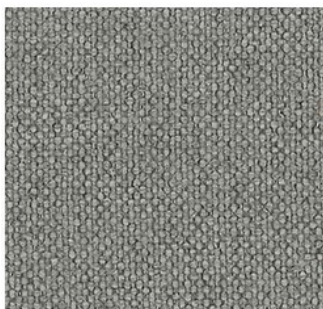
SAND



LIGHT GREY



SKY



FOG



ASH



OCEAN



ELEPHANT



ANTHRACIT



BLACK

Tessuto / Fabric

TOBAGO



Tessuto idrorepellente
Water repellent fabric

Composition 100% Polyester

Width 140 cm +/-2%

Weight 430 gr/m2 +/-5%

Category plain fabric

Usage  

Treatment 

Care     



00



01



04



14



24



34



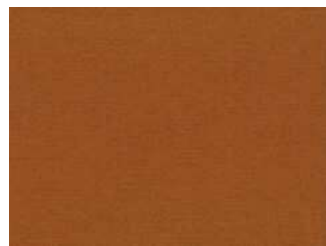
44



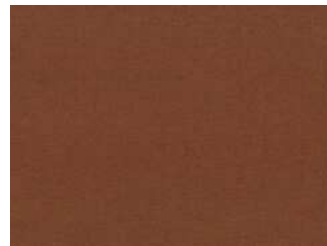
54



25



49



23



13



03



08



18



28



38



57



37



47



67



27



17



06



16



26



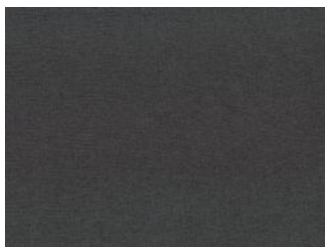
36



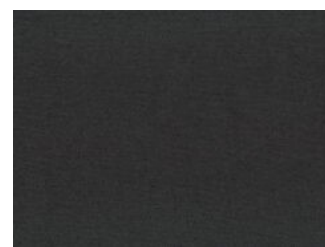
46



56



66



76

TOBAGO

Water Repellent

COMPOSITION ZUSAMMENSETZUNG COMPOSIZIONE TESSUTO		100% POLYESTER 100% POLYESTER 100% POLIESTERE	
WIDTH BREITE ALTEZZA	140 cm +/-2%	WEIGHT GEWICHT PESO	430 gr/m ² +/-5%
TEST	STANDARD	RESULTS WARP/ KETTE/ ORDITO	ERGENIS/RISULTATI WEFT/ SCHUSS/ TRAMA
TENSILE STRENGTH ZUGFESTIGKEIT RESISTENZA ALLA TRAZIONE	EN ISO 13934-1	2208 N	1056 N
TEAR STRENGTH WEITERREISSFESTIGKEIT RESISTENZA ALLA LACERAZIONE	EN ISO 13937-3	215 N	214 N
RESISTANCE TO SEAM SLIPPAGE NAHTSCHIEBEWIDERSTAND RESISTENZA ALLO SCORRIMENTO DELLA CUCITURA	EN ISO 13936-2	1,9 mm	2,7 mm
ABRASION RESISTANCE SCHEUERBESTAENDIGKEIT RESISTENZA ALL'ABRASIONE	EN ISO 12947-1 EN ISO 12947-2	>100.000 REVS /TOUREN/GIRI	
PILLING RESISTANCE PILLBILDUNG RESISTENZA PILLING	EN ISO 12945-2 5.000 REVS./ SCHEUERTOUREN/GIRI	4	
COLOUR FASTNESS TO LIGHT LICHTECHTHEIT RESISTENZA ALLA LUCE	EN ISO 105-B02 Method 2	>5	
COLOUR FASTNESS TO RUBBING REIBECHTHEIT RESISTENZA COLORE ALL'ABRASIONE	EN ISO 105-X12	DRY TROCKEN/ SECCO	WET/ NASS/UMIDO
		3-4	4
CONTAIN OF AZO DYES AZOFARBSTOFFE CONTENUTO DI COLORANTI AZOICI	DIN EN 14362-1 DIN EN 14362-3	NOT DETECTABLE NICHT NACHWEISBAR NON RILEVABILE	
ALLERGY CAUSING DYES ALLERGISIERENDE FARBSTOFFE CONTENUTO DI COLORANTI ALLERGENICI	DIN 54231	NOT DETECTABLE NICHT NACHWEISBAR NON RILEVABILE	
FIRE RETARDANT BRENNVERHALTEN IGNIFUGO	DIN EN 1021-1 -without soaking- BS 5852 Source 0 -without soaking-	PASSED UEBERSTANDEN SUPERATO	
FABRIC PROTECTION STOFFSCHUTZ PROTEZIONE TESSUTO	WATER REPELLENT WASSERABWEISEND IDROREPELLENTE		

COLOUR DIFERENCES BETWEEN DYING LOTS ARE POSSIBLE

FARBNIANSEN SIND MOEGLICH
TRA I VARI LOTTI POSSONO VERIFICARSI DELLE VARIAZIONI NEL COLORE.



Tessuto / Fabric

URBAN



Tessuto intrecciato Plated fabric



GOOD FOR
BABIES



GOOD FOR
PLANET



WATER BLOCKED



REACH CONFORM



NON-FLAMMABLE

FABRIC TYPE GEWEBE ART		plaited fabric Geflechtstoff	
WEIGHT GEWICHT		450 g/m ²	
COMPOSITION ZUSAMMENSETZUNG		100% PES	
WIDTH OF ROLL BREITE		140 cm +/- 2 cm	
CERTIFICATE ZULASSUNG	TEST SPECIFICATION PRUFVERFAHREN	TEST RESULT WERT	CATEGORY KATEGORIE
TENSILE STRENGTH HOCHZUGFESTIGKEIT	DIN EN ISO 13934-1	warp: 1989 N (39,1%) weft: 635 N (40,0%)	A/A
TEAR GROWTH RESISTANCE REISSFESTIGKEIT	DIN EN ISO 13937-3	warp: 116,5 N weft: 64,5 N	A/A
RESISTANCE TO SEAM SLIPPAGE VERSCHIEBBARKEIT DER FÄDEN IN DER NAHT	DIN EN ISO 13936-2 180 N load	warp: 2,3 mm weft: 3,0 mm	A/A
ABRASION RESISTANCE MARTINDALE METHODE	DIN EN ISO 12947-1 DIN EN ISO 12947-2	Yarn breakage: 83 000 cycles	A
PILLING TEST ANFÄLLIGKEIT FÜR FUSSELN	DIN EN ISO 12945-2 2000 cycles	4-5	A
COLOUR FASTNESS TO LIGHT LICHTBESTÄNDIGKEIT	DIN EN ISO 105-B02 Process 3	4	C
COLOUR FASTNESS TO RUBBING REIBUNGSBESTÄNDIGKEIT	DIN EN ISO 105-X12	dry trocken: 5 wet nass: 5	A/A
IGNITABILITY BRANDVERHALTEN	BS 5852 Source 0 TB 117-2013	passed bestanden	
REACH		passed bestanden	



urban_1



urban_2



urban_3



urban_4



urban_5



urban_6



urban_7



urban_8



urban_9



urban_10



urban_11



urban_12



urban_13



urban_14